



Babcor Packaging

WE ARE YOUR BEST RETAIL PACKAGING SOURCE.

[Links](#) | [How to Order](#) | [FAQ](#) | [Contact Us](#)

Call us toll-free 800-321-2247

Local: 412-321-4066

Fax: 412-321-7253



Bags



Boxes



Tissue



Giftwrap



Ribbons & Bows



Labels & Tags



Packaging Supplies

[Solid Colors - White & Krafts](#)

[Designer Prints](#)

[Food Service](#)

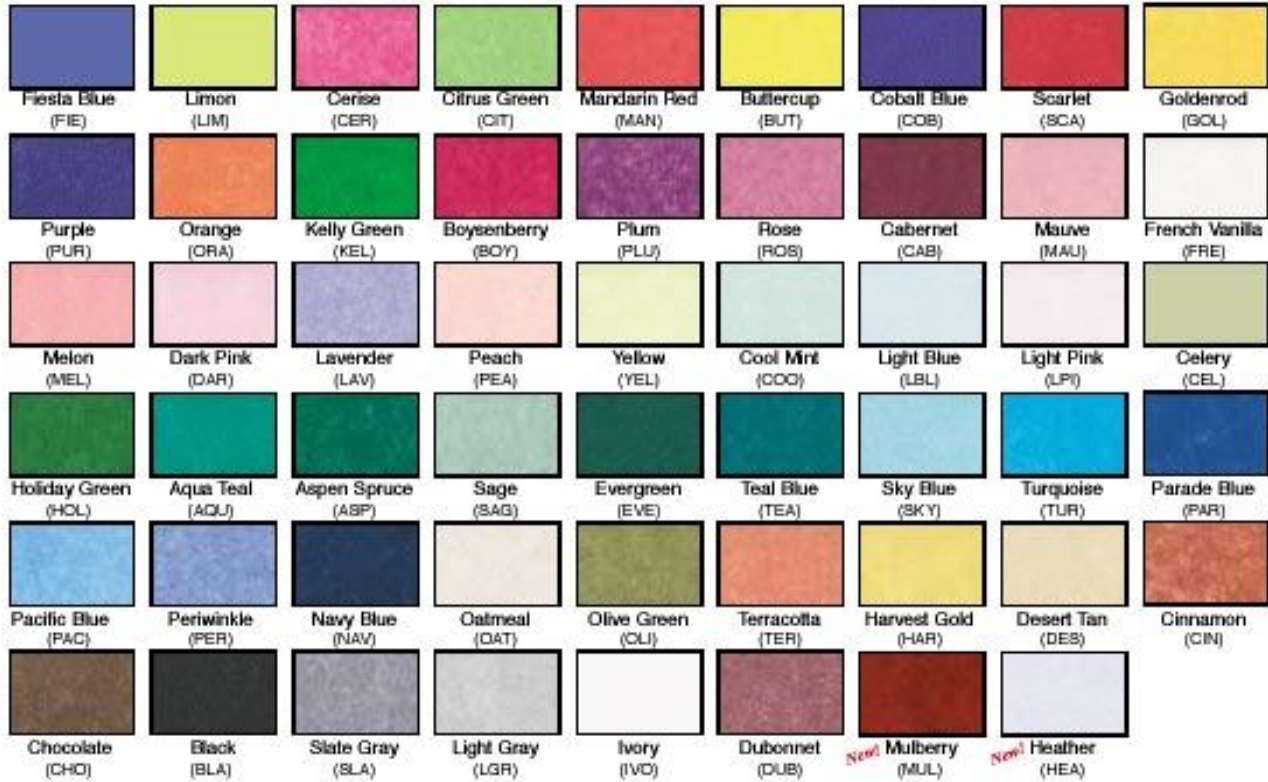
Solid Colors, White & Kraft Tissue

Premium White and Kraft Tissue is stocked in the best sizes for your store. Tissue is sold in individual clear poly wrapped packs and is the best quality.

Color tissue is stocked in over 50 colors for quick shipment. These designer colors are keyed to coordinate with other packaging items and to help you customize your store image.

You can easily choose the color tissue right for you at Babcor Packaging.

Colored Tissue



Frosted Tissue



Colored Tissue

| Product Code | Size | Colors | Sheets/Pkg. |
|---------------------|----------------------|---------------|-------------|
| Solid Colors | | | |
| TI-____ | 20" x 30" Quire Fold | All 53 Colors | 480 |
| Assortments | | | |

| | |
|----------------------|--|
| Bright Pack | Includes: 4 Sheets each of 6 bright colors per Quire. 20 Quires per team. |
| Complete Pack | Includes: 1 Quire each of all colored tissue, plus White and Recycled Kraft. |
| Holiday Pack | Includes: 6 Quires each of Holiday Red, 6 Quires of Holiday Green, and 8 Quires of White. |
| Light Pack | Includes: 4 Sheets each of 6 light colors per quire. 20 Quires per ream. |
| Medley Pack | Includes: 40 Sheets each of 12 different colors. |
| Spring Pack | Includes: 4 Quire each of Light Pink, Light Blue, Yellow, Lavender, and Peach. |
| Popular Pack | Includes: 1 Quire each of SCA, HOL, LAV, PUR, FRE, CER, BLA, PAR, DAR, YEL, BUT, TUR, WHI, CIN, SKY, ASP, ORA & AQU. |

| | | | |
|------------|----------------------|-------------|------|
| TI-BRI | 20" x 30" Quire Fold | Bright Pack | 480 |
| TI-COM | 20" x 30" Quire Fold | Complete | 1104 |
| TI-HOLIDAY | 20" x 30" Quire Fold | Holiday | 480 |
| TI-LIG | 20" x 30" Quire Fold | Light Pack | 480 |
| TI-MED | 20" x 30" Quire Fold | Medley | 480 |
| TI-SPR | 20" x 30" Quire Fold | Spring | 480 |
| TI-POP | 20" x 30" Quire Fold | Popular | 480 |

Metallic & Frosted

| | | | |
|--------|---------------------|---------------------|-----|
| TI-___ | 20" x 30" Soft Fold | B-Metallic (1 Side) | 200 |
| TI-___ | 20" x 26" Soft Fold | C-Frosted (1 Side) | 100 |
| TI-___ | 20" x 26" Soft Fold | D-Frosted (2 Sided) | 100 |

Premium White Tissue Sheets

| Product Code | Size | Sheets/Pkg. |
|--------------|---------------------------------------|-------------|
| TI-15WHI | 15" x 20" Flat - 2 Ream Wrapped | 960 |
| TI-1824WHI | 18" x 24" Flat - 2 Ream Wrapped | 960 |
| TI-1827WHI | 18" x 27" Flat - 2 Ream Wrapped | 960 |
| TI-20WHIF | 20" x 30" Flat - 2 Ream Wrapped | 960 |
| TI-20WHIQ | 20" x 30" Quire Fold - 1 Ream Wrapped | 480 |

Recycled Kraft Wrapping Tissue Sheets

| Product Code | Size | Sheets/Pkg. |
|--------------|---------------------------------|-------------|
| TI-15REC | 15" x 20" Flat - 2 Ream Wrapped | 960 |
| TI-20RECF | 20" x 30" Flat - 2 Ream Wrapped | 960 |

Industrial Packing Tissue

| Product Code | Size | Sheets/Pkg. |
|--------------|----------------|-------------|
| TI-IP1520 | 15" x 20" Bulk | 5550 |
| TI-IP2030 | 20" x 30" Bulk | 2775 |
| TI-IP2036 | 20" x 36" Bulk | 2150 |



Click here to download a PDF of this page.

Can't find what you're looking for?
Call us at 800-321-2247



FAST
24 hour shipping!
for stock merchandise

CLICK HERE!
Sign-up for news on new products & promotions

[Bags](#)

[Boxes](#)

[Tissue](#)

[Giftwrap](#)

[Ribbons & Bows](#)

[Labels & Tags](#)

[Packaging Supplies](#)